

VIOLA

# LE GRAND TANGO

per violoncello (o viola) e pianoforte

Astor PIAZZOLLA  
(1921-1992)

Tempo di Tango (♩ = 116)

mf

9

f

gliss.

sfz

gliss.

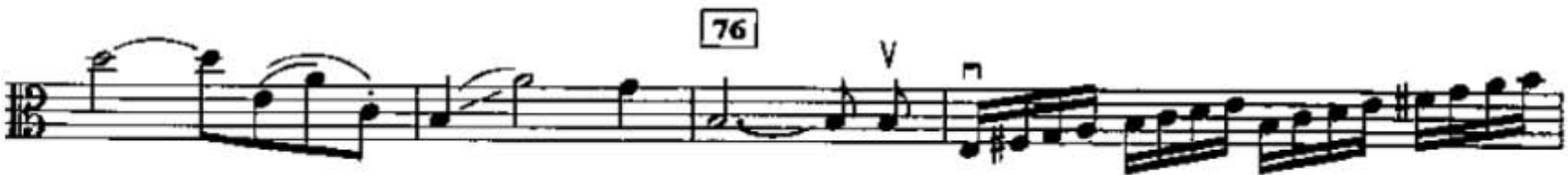
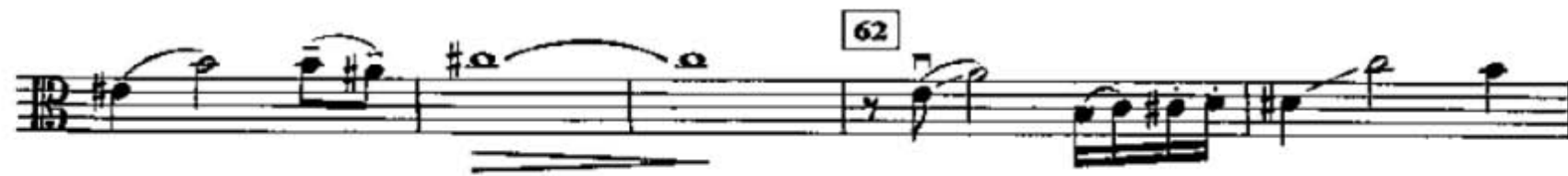
fp

mf

25

f





*mf*

95

*f rall.*

103 *Meno mosso* (♩ = 80)

*mf libero e cantabile*

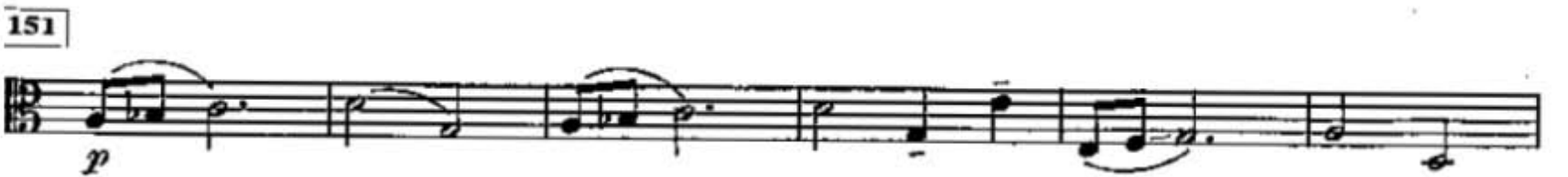
*rall.* *a tempo*

111

*f*

119

*p rall.* *mf a tempo*



163 *mf*

171

*rall.*

177 *mf*

*rall.* *a tempo*

185 *f*

*rall.*

194 Più mosso (♩ = 120) *f*



255

ff

263

*Erwin Music Studio*



